

PROMOTING SUSTAINABLE CATTLE RANCHING IN THE AMAZON ALTA FLORESTA-MT



Execution



Support



Norad



GTPS
Grupo de Trabalho da
Pecuária Sustentável



Instituto
Internacional para
Sustentabilidade

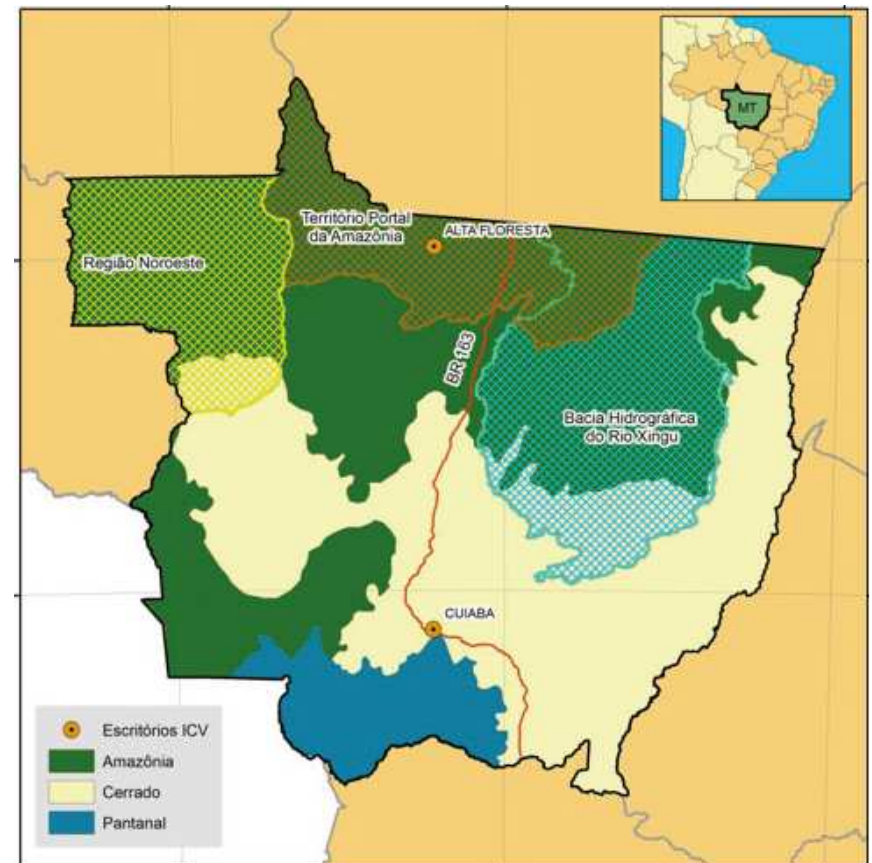
Partners



ICV: WHO WE ARE



- Civil Society Organization, based in Cuiabá, Mato Grosso State, founded in 1991
- Mission: ***Build shared solutions for land use sustainability***
- Geographic scope of work: ***Mato Grosso State***
- 3 offices:
 - Cuiabá
 - Alta Floresta
 - Cotriguaçu
- 48 staff



- **Context of agriculture and cattle ranching in Mato Grosso**
- **Project strategy and actions**
- **Preliminary results**

Environmental Challenges for Cattle Ranching in MT

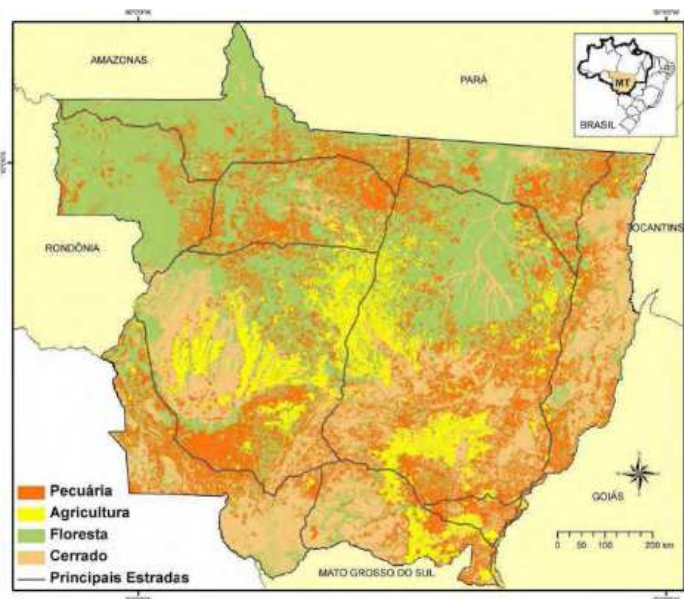
Soil degradation



Pasture degradation



Deforestation



Water resources degradation



- **Context of agriculture and cattle ranching in Mato Grosso**
- **Project strategy and actions**
- **Preliminary results**

PROJECT TECHNICAL BASIS: GOOD AGRICULTURAL PRACTICES



Reproduction management

Farm management

Social responsibility



Human resources management

Facilities

Environmental management



Sanitary control

Pre-slaughter management

Pastures



Feeding

Animal identification

Animal well-being



BPA
Brazilian GAP
Bovinos de Corte

Embrapa

Gado de Corte

Recovering pastures

Evaluation



Soil improvement



Intensified grazing area



Livestock – forest integration

Management in pasture areas



Restoring degraded riparian forest



Location



Cut grass on tracks



Mix of seeds



After 40 days

Restoring degraded riparian forest



Preservation of water sources

Waterwheel



Tank



Fountain



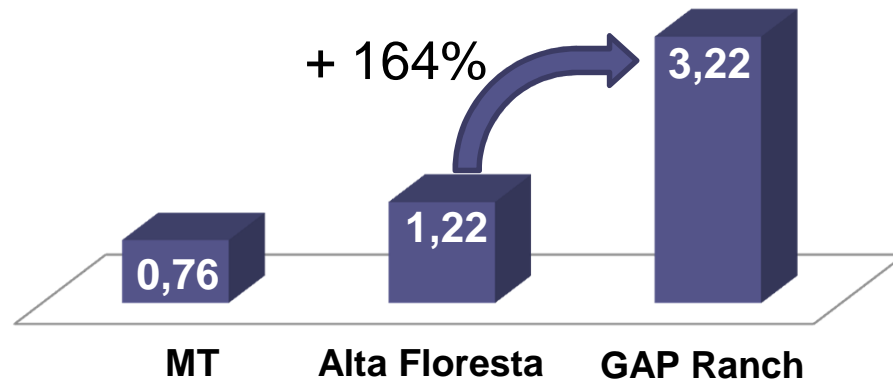
Fountain



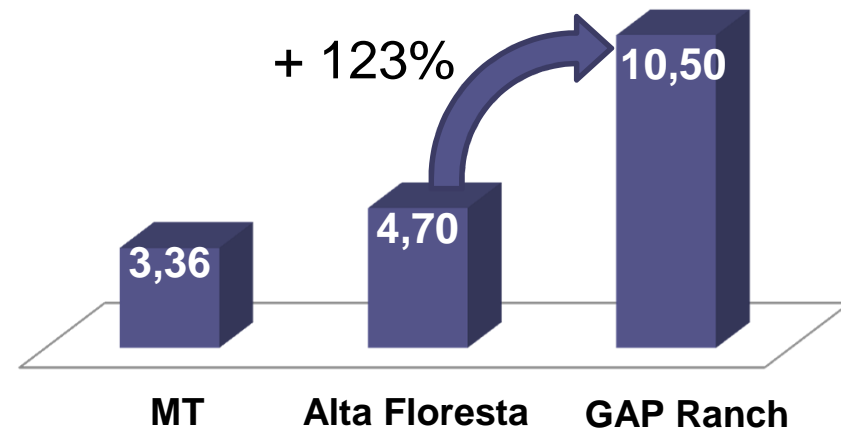
- **Context of agriculture and cattle ranching in Mato Grosso**
- **Project strategy and actions**
- **Preliminary results**

Assessment Feb - Dec 2013

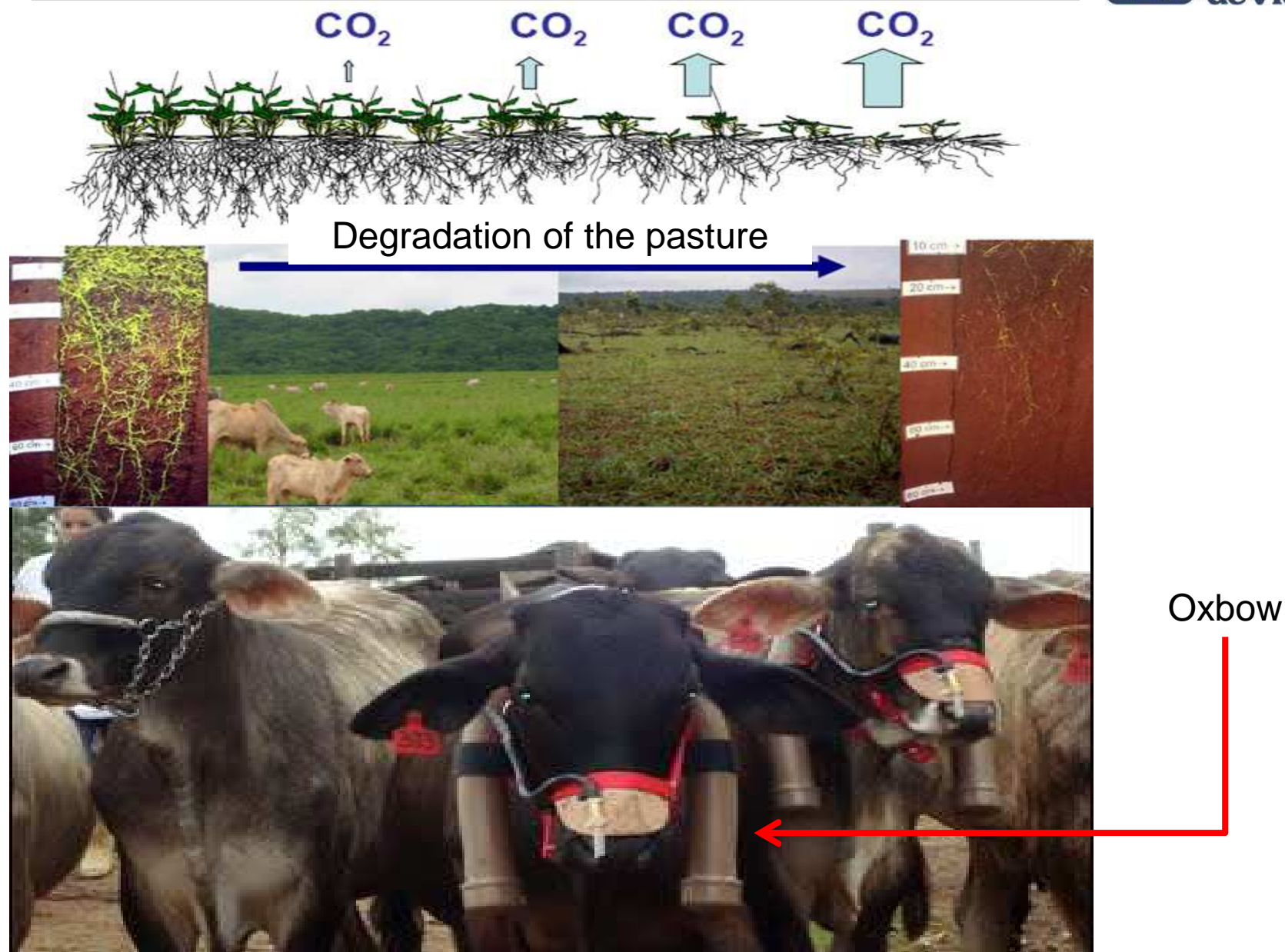
Stocking (AU/ha)



Productivity @/ha/year



Measuring the carbon balance



Disseminating results

Field day



Lecture



Embrapa



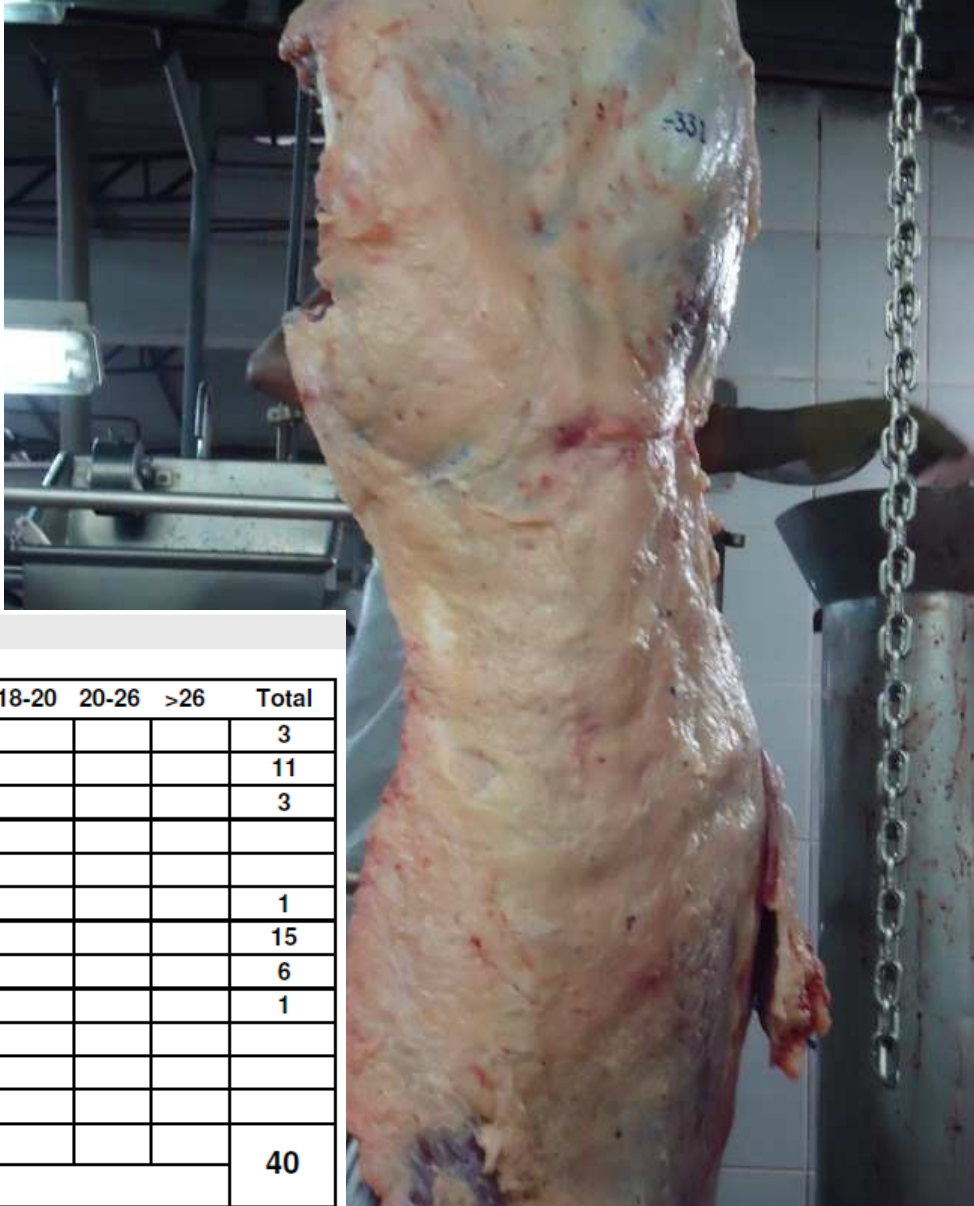
Visits

Promoting a graduate course about GAP



Clean supply chain agreement

Carcass evaluation at JBS



Quality goal

Resumo do Abate

Acab.	Maturidade	-11	11-12	12-13	13-14	14-15	15-16	16-17	17-18	18-20	20-26	>26	Total
1	0-8			1	1	1							3
2	0		2	6	3								11
2	2			3									3
2	4												
2	6												
2	8			1									1
3-4	0		3	11	1								15
3-4	2		1	3	2								6
3-4	4				1								1
3-4	6												
3-4	8												
5	0-8												
Total por Arroba			6	25	8	1							40
Total													40

The path to sustainable farming is possible when we build shared solutions that promote sustainable land use.



Thanks